




JX2-4

MEDIUM LEVEL ORDER PICKER 1.0T

 1000 kg  3200-3600 mm  24 V



The JX2-4 is designed for warehouses, retail distribution centers, and logistics hubs requiring stable, safe, and efficient order picking. Its strong mast and dual lifting system ensure reliable handling, while proportional lift and lowering enhance precision. Operators benefit from wide mast visibility, an ergonomic standing platform, and optional safety add-ons such as warning lamps and buzzers for use in busy environments.

SPECIFICATION	REF	UNIT	VALUE
Battery nominal capacity		Ah	360
Battery voltage		V	24
Load capacity	Q	kg	1000
Load centre distance	c	mm	600
Service weight		kg	2020 2061
Retracted mast height	h ₁	mm	2170-2360
Lift height	h ₃	mm	3200-3600
Height, mast extended	h ₄	mm	5410 5855
Overall length		mm	2750
Overall width	b ₁ /b ₂	mm	860
Length to face of forks	l ₂	mm	1680
Fork dimensions	s/e/l	mm	40/100/1070
Turning radius		Wa	1600
Operator type			Order-picker
Load distance, centre of drive axle to fork		mm	115
Wheelbase		mm	1365

Features

High lifting capacity

With a 1000 kg load capacity and lift heights up to 3.6 meters, the JX2-4 supports stable, efficient picking at medium rack levels.

Compact and agile design

At only 860 mm wide with a turning radius of 1600 mm, the truck is ideal for confined warehouse aisles and tight operating conditions.

Reliable Li-ion-ready battery system

Equipped with a 24V/360Ah battery and integrated 50A charger, the JX2-4 provides consistent runtime and supports opportunity charging with optional external systems.

Operator comfort and safety

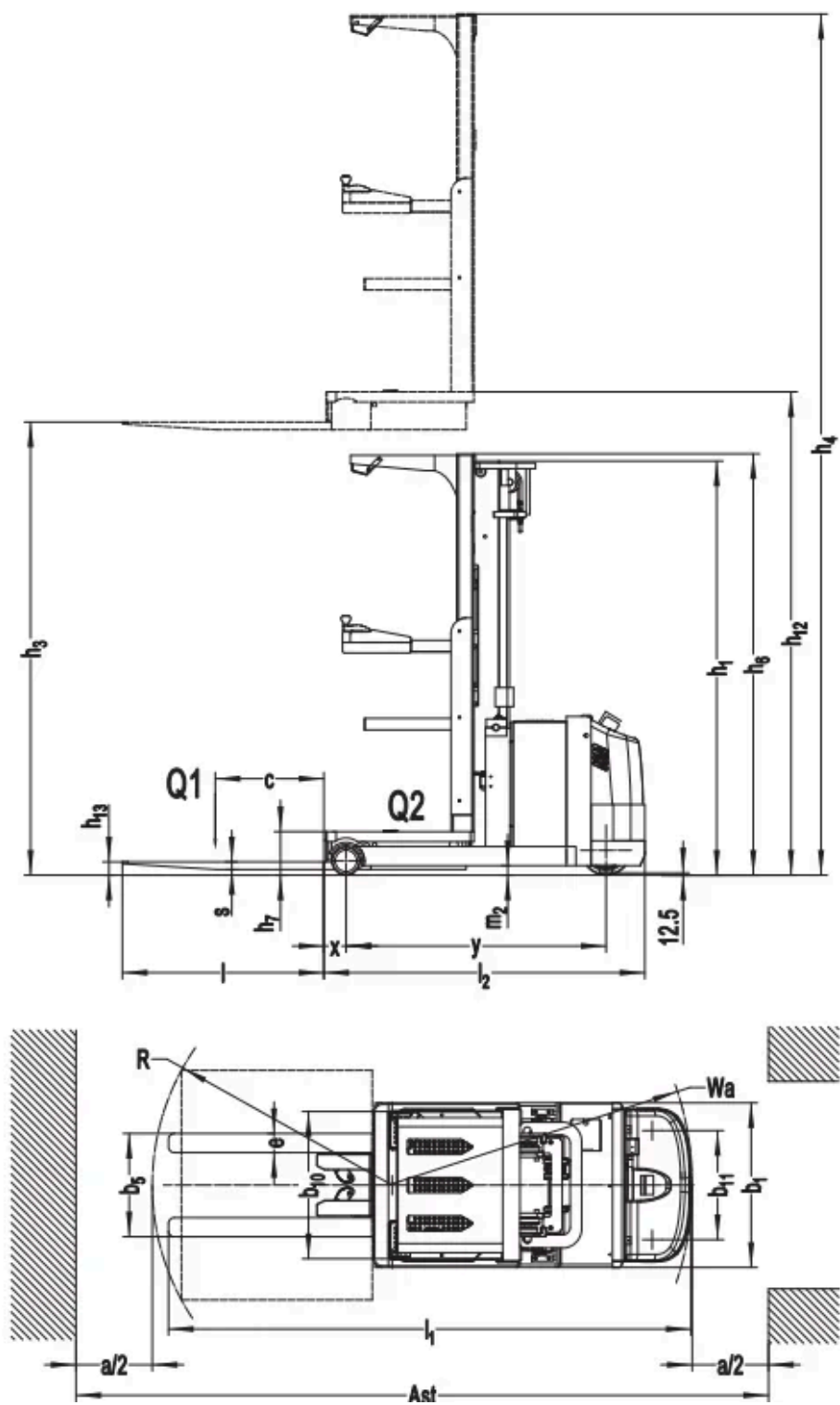
Ergonomic standing platform, wide mast visibility, electronic steering, and electromagnetic brakes ensure operator comfort and safe operation during intensive shifts.

VDI Chart

SPECIFICATION		REF	UNIT	VALUE
1.4	Operator type			Order-picker
1.5	Load capacity	Q	kg	1000
1.6	Load centre distance	C	mm	600
1.8	Load distance, centre of drive axle to fork		mm	115
1.9	Wheelbase		mm	1365
2.1	Service weight		kg	2020 2061
2.2	Axle loading, laden front/rear		kg	2367/789 2378/819
2.3	Axle loading, unladen front/rear		kg	814/1206 802/1259
3.1	Tyre type			Polyurethane/Solidrubber
3.2	Tyre size, front		mm	φ165*120
3.3	Tyre size, rear		mm	φ260*105

	SPECIFICATION	REF	UNIT	VALUE
3.4	Additional wheels (castor wheels)		mm	φ74*48
3.5	Wheels, number front/rear (x=drive wheels)			1x , 2/2
3.6.1	Tread width, front	b ₁₀	mm	740
3.7.1	Tread width, rear	b ₁₁	mm	570
4.1	Tilt of mast/fork carriage forward/backward		°	0
4.10	Height of wheel arms		mm	740
4.14	Stand height, elevated			3360 3815
4.15	Lowered height			63
4.19	Overall length		mm	2750
4.2	Retracted mast height	h ₁	mm	2170-2360
4.20	Length to face of forks	l ₂	mm	1680
4.21	Overall width	b ₁ /b ₂	mm	860
4.22	Fork dimensions	s/e/l	mm	40/100/1070
4.24	Fork carriage width		mm	100
4.3	Free lift		mm	-
4.31	Ground clearance, laden, below mast		mm	2020
4.32	Ground clearance, centre of wheelbase		mm	50
4.34.1	Aisle width for pallets 1000×1200 crossways		Ast	3100
4.34.2	Aisle width for pallets 800×1200 lengthways		Ast	3150
4.35	Turning radius		Wa	1600
4.4	Lift height	h ₃	mm	3200-3600
4.5	Height, mast extended	h ₄	mm	5410 5855
4.6	Initial lift		mm	0
4.7	Height of overhead guard (cabin)		mm	2270
4.8	Seat height/standing height		mm	220
5.1	Travel speed, laden/unladen		km/h	8/8
5.10	Service brake			Electromagnetic
5.11	Parking brake			Electromagnetic
5.2	Lifting speed, laden/unladen		m/s	0.13/0.16
5.3	Lowering speed, laden/unladen		m/s	0.41/0.25
5.8	Max. gradeability, laden/unladen		%	0
6.1	Drive motor rating S2 60 min		kW	3.3
6.2	Lift motor rating at S3 15%		kW	3
6.4	Battery nominal capacity		Ah	360

SPECIFICATION		REF	UNIT	VALUE
6.4	Battery voltage		V	24
6.5	Battery weight		kg	330
6.6	Energy consumption according to DIN EN 16796		kWh/h	- ¹⁾
6.7	Turnover output according to VDI 2198			-
6.8	Turnover efficiency according to VDI 2198			-
8.1	Type of drive control			AC
10.5	Steering design			Electronic
10.7	Sound pressure level at the drivers ear		dB(A)	70
15.1	Charger output current		A	50



Options

ITEM	OPTIONS (optional items marked in yellow)
Fork dimension	1000*600, 2A, 100*40*1070 1000*600, 2A, 100*40*1200

ITEM	OPTIONS (optional items marked in yellow)
Load wheel type	Single
Safe hook	No
Traction pin	No
Electrostatic chain	No
Load wheel material	Rubber
Drive wheel material	PU
Battery capacity	No 360AH
Charger	No 24V-50A External
Battery display indicator (BDI)	With hourmeter
Buzzer	Drop buzzer Drop buzzer, Reversing buzzer Drop buzzer, Running buzzer Drop buzzer, Door alarm buzzer Drop buzzer, Door alarm buzzer, Reversing buzzer Drop buzzer, Door alarm buzzer, Running buzzer
Turtle speed	Yes
Guide wheel	No
USB interface	No
Castor wheels	Yes and not customized
Water auto-filling system	No
Warning lamp	Rear
Battery side pull function	Yes and not customized
Overhead guard	Yes and not customized
Battery side pull attachment	No
Pin code	AC